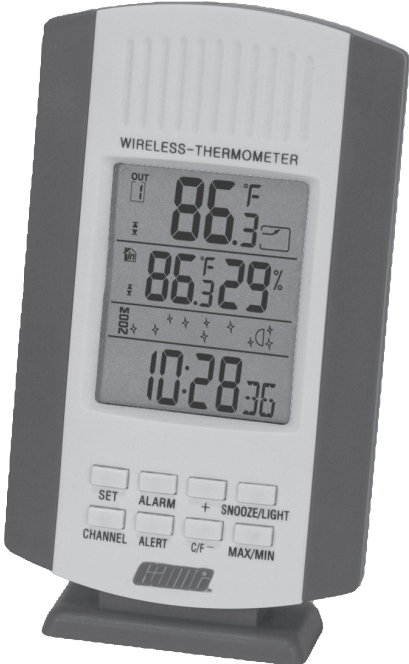


# DIGITAL WIRELESS THERMOMETER OWNER'S MANUAL

MODEL 4301



# INTRODUCTION

Enclosed in this package is one main receiving unit, one wireless floating pool thermometer sensor, a screwdriver, and a tethering cord.

The receiver unit has a multi-line LCD that displays readings for the indoor/outdoor air and water temperatures, maximum and minimum recordings and trend indicators.

In addition to monitoring maximum and minimum temperature readings, the unit also has an alarm that can be set to activate once the readings exceed a user determined high or low temperature.

The receiver unit features a moon phase indicator, which shows the moon's current phase, provided the date and time functions are properly set.

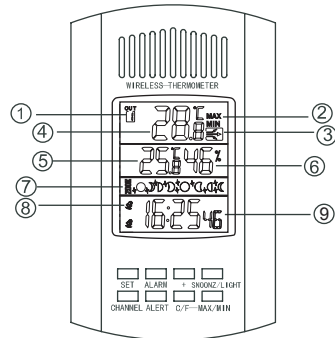
The receiver has a built-in alarm clock, with two possible alarm settings. The alarm can be set to go off two times each day.

The transmission frequency of the wireless pool thermometer is 433MHz.

# OVERVIEW OF RECEIVER

## Front View

1. Channel Indicator (1, 2 or 3)
2. Minimum and maximum temperature
3. Temperature trend indicators
4. Sensor temperature
5. Receiver temperature
6. Receiver humidity
7. Moon phase indicator
8. Alarm (Channels 1 & 2)
9. Seconds or week indicator

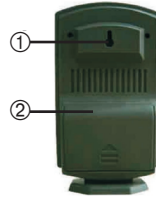


# NAME AND FUNCTIONS OF BUTTONS

BUTTON FUNCTIONS	Press Button Once	Press and Hold Button 3 Seconds
CHANNEL	Select Channel 1,2,3 auto scroll	Delete current channel
SET	Confirm setting	Enter clock/calendar setting (time)
+	1 step forward Alarm 1, Alarm 2 on/ off	Fast advance Select 12/24 hour format
C/F -	1 step backward, °C/°F select	Fast backward
MAX/ MIN	View maximum & minimum temperature	Clear memory
ALARM	Read Time/Month/Day/Week and alarm time 1 and 2	Set alarm time for Alarm 1 and Alarm 2
ALERT	Temperature Alert on/off	Set alert temperature values
SNOOZE/LIGHT	Trigger snooze alarm/turn on light	

## Back View

1. Wall Mount
2. Battery compartment

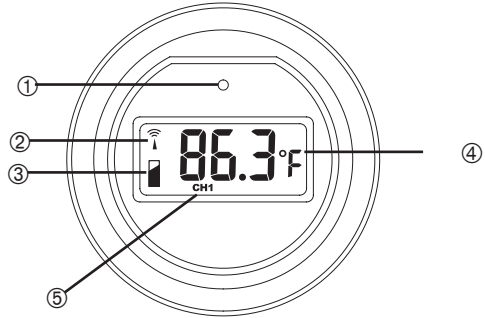


## OVERVIEW OF REMOTE SENSOR

---

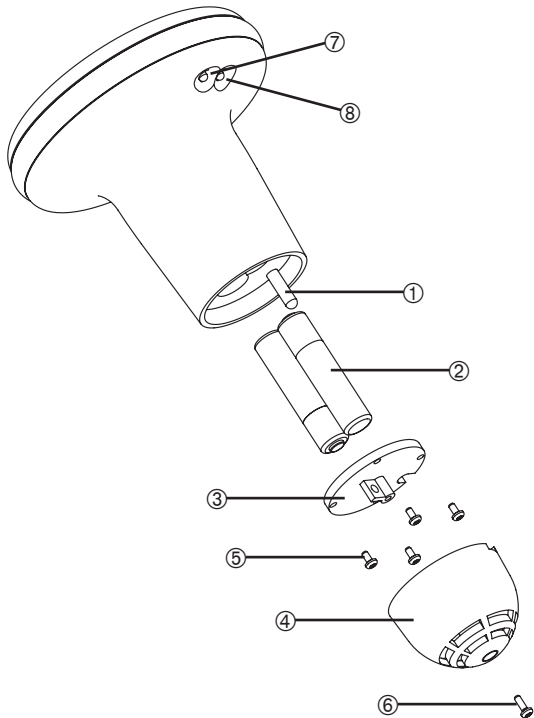
### Front View

1. LED Indicator
2. Transmit icon
3. Low battery indicator
4. LCD temperature display
5. Channel indicator



### Exploded View

1. Temperature Sensor
2. Two AAA Batteries
3. Battery cover
4. Sensor cover
5. Four screws for battery cover
6. Sensor cover screw
7. Transmit button
8. °C/°F button



## **SPECIFICATIONS**

---

Range of temperature measurement:

Receiver:	-0 °C to 50 °C (32°F to 122°F)
Remote sensor:	-50 °C to 70 °C (-58°F to 158°F)
Transmission:	30M (100 ft.) open area, RF 433 MHz
Resolution:	0.1 degree
Battery life:	12 months (alkaline batteries recommended)

### **Note**

- Always read the owner's manual carefully before operating the unit.
- Avoid placing the receiver near interference sources/metal frames such as computer or TV sets.
- The receiver loses its time information when the battery is removed.
- The unit will automatically exit all menus after 8 seconds without adjustment.
- The remote sensor transmits every 2.5 minutes if the temp change is less than 0.5 °C / 1.1 °F. If the temperature change is more than 0.5 °C / 1.1 °F it will transmit every 30 seconds. The remote sensor will measure temperature every 10 seconds.

## **RECEIVER BATTERY INSTALLATION**

---

For first time installation, always insert batteries in the receiver unit and then the remote sensor. The receiver will seek a sensor within range.

1. Slide open the battery cover at the back of the unit.
2. Install two (2) AA batteries according to the polarity indicated.
3. Replace the battery cover.

## **SETTING UP THE SENSOR**

---

- Place the sensor as close to the receiver as possible.
- The battery compartment is in the tubular casing of sensor (see Exploded View on previous page). Remove sensor cap by releasing screw located in the center of cover. To remove battery cover, unscrew and remove all 4 screws. Locate the plastic clip at the center of cover, insert screwdriver into circular opening and gentle pry upwards to release battery cover.
- Install two (2) AAA batteries according to the polarity indicated.
- Tighten the screws on the battery cover in the order indicated (1 thru 4) on the bottom of the battery cover. Then replace the sensor cover.
- The red LED on the remote sensor will flash when it transmits a signal. Temperature of the remote sensor will be updated and displayed on the sensor's LCD.
- If the remote sensor does not automatically pair with the receiver, hold the "Channel" button for 3 seconds until it beeps. Release the button. Then hold the "Tx" button on the remote sensor. They will beep again once paired.
- Press the "°C/°F" button on the back of the remote sensor to change from Fahrenheit to Celsius.

## CLOCK & CALENDAR SETTING

---

Hold the "SET" button for 3 seconds to enter clock set mode. Using "+, -" to adjust and "SET" to confirm, the following values can be set in sequence: Year > Month > Date > Language > Hour > Minutes. Hold "+" button to change from 12/24 hour time format.

### Viewing month, date, and week

In normal display mode, press "alarm" key to view month, date and day of week.

### Alarm mode

To view Alarm 1 and 2, press "Alarm" button until either AL 1 or AL 2 as shown on the display. The alarm time will display for 5 seconds, then resume normal clock function. Hold the "Alarm" key for 3 seconds while viewing the desired Alarm to change the Alarm time. Press "+" or "-" to enter the desired value and press "Alarm" to confirm setting. To turn the Alarms on and off, press "+" button when the alarm is active. The unit will provide a "Crescendo" audio alarm which will last 2 minutes.

### Snooze

When the receiver Alarm is sounding, press the "Snooze/Light" button to stop the alarm in Snooze Mode. The snooze icon will appear on the LCD display while Snooze Mode is active. After 5 minutes, the receiver Alarm will sound again until the Snooze Mode is reactivated or the alarm is allowed to turn off.

### Alerts

Alerts are used to inform the user when the temperature goes above or below a specified range. To turn the Alerts on and off press the "Alert" button. To adjust the Alerts hold the "Alert" button for 3 seconds. Use the "+" and "-" buttons to select which alert you would like to adjust. Once you have selected which alert you would like to adjust press the "Alert" button again and use the "+" and "-" buttons to adjust the upper and lower temperatures. You will then be alerted when the temperature goes above or below the selected temperatures.

### Max/Min Temperatures

The maximum and minimum temperature values are recorded and stored until reset by the user (or batteries are replaced). To view the maximum and minimum temperatures press the "Max/Min" button. To reset the Max and Min temperatures hold the "Max/Min" button for 3 seconds.

## TEMPERATURE TREND INDICATORS

---









The small arrow icons will indicate:  
Rising, Steady, or Falling Temperatures.



## MOON PHASE

---

8 moons appear, displaying the moon phase

A: New Moon	
B: Waxing Crescent	
C: First Quarter	
D: Waxing Gibbous	
E: Full Moon	
F: Waning Gibbous	
G: Last Quarter	
H: Waning Crescent	

## LOW BATTERY INDICATOR

---

Low battery indication is available for the receiver itself and all of the remote channels. A Low Battery warning icon will appear on the sensor screen and on the receiver screen for each sensor paired to a channel. When the low battery indicator appears, replace the batteries and follow the setup procedure as mentioned in this instruction manual.

## FCC STATEMENT

---

1. This device complies with Part 15 of the FCC Rules.

Operation is subject to the following two conditions:

- (1) This device may not cause harmful interference, and
- (2) This device must accept any interference received, including interference that may cause undesired operation.

2. Changes or modifications not expressly approved by the party responsible for compliance could void the user's authority to operate the equipment.

## **12. LIMITED WARRANTY STATEMENT**

---

The manufacturer warrants safe operation and reliability only under the following conditions:

- The product is installed and operated according to the assembly and operating instructions.
- Only original replacement parts are used.

### **General Terms**

This Limited Warranty applies to the enclosed product (the "Product") distributed by Great American Duck Races, Inc., an Arizona corporation (doing business as Great American Marketing and Events) ("GAME").

GAME warrants that the Product will be free from defects in materials and workmanship under normal use for a period of ninety (90) days from the date of purchase. (Your dated sales or delivery receipt, showing the date of your Product purchase, is your proof of the purchase date.) During the warranty period, GAME will repair or replace any defective parts at no charge.

All defective parts that are replaced by GAME will be replaced, at GAME's discretion, with either new parts or used parts that meet or exceed performance specifications for new parts. All parts removed from the Product under this warranty will become the property of GAME. Repair or replacement of any parts will not serve to extend the ninety (90) days warranty period.

This Limited Warranty does not apply to expendable parts. This Limited Warranty does not extend to any product (a) from which the serial number has been removed or (b) that has been damaged or rendered defective (i) as a result of accident, misuse, abuse or other external causes; (ii) by operation outside the usage parameters stated in the manual that shipped with the Product; (iii) by the use of parts not manufactured or sold by GAME; or (iv) by modification or service by anyone other than GAME or an authorized GAME distributor.

If a defect is identified within the warranty period, please contact GAME.

**EXCEPT FOR THE LIMITED WARRANTY SET FORTH ABOVE, GAME EXPRESSLY DISCLAIMS ALL OTHER WARRANTIES, WHETHER EXPRESS OR IMPLIED, ORAL OR STATUTORY (INCLUDING, WITHOUT LIMITATION, WARRANTIES OF MERCHANTABILITY AND FITNESS FOR A PARTICULAR PURPOSE). ANY IMPLIED WARRANTIES THAT MAY BE IMPOSED BY LAW ARE LIMITED TO THE TERMS OF THE ABOVE LIMITED WARRANTY.**

### **Limitation of Liability**

**EXCEPT FOR THE LIMITED WARRANTY DESCRIBED ABOVE, IN NO EVENT WILL GAME HAVE ANY LIABILITY OF ANY KIND WHATSOEVER (WHETHER UNDER CONTRACT, TORT, OR ANY OTHER THEORY OF LEGAL LIABILITY) TO ANY PERSON WITH RESPECT TO THE PRODUCT (INCLUDING, WITHOUT LIMITATION, (A) ANY USE OR MISUSE OF THE PRODUCT, (B) ANY FAILURE OR MALFUNCTION OF THE PRODUCT, (C) ANY BODILY INJURY, DEATH, LOSS OF OR DAMAGE TO ANY PROPERTY, OR ANY OTHER DAMAGES RELATED TO OR RESULTING FROM THE PRODUCT OR ITS USE (INCLUDING, WITHOUT LIMITATION, ANY SPECIAL, INCIDENTAL, CONSEQUENTIAL OR PUNITIVE DAMAGES, LOST PROFITS, LOSS OF USE), EVEN IF GAME OR GAME'S AUTHORIZED REPRESENTATIVES HAVE BEEN ADVISED OF THE POSSIBILITY OF ANY SUCH DAMAGES.**

### **Severability**

Any provision of this Limited Warranty which is prohibited or unenforceable in any jurisdiction will, as to such jurisdiction, be ineffective to the extent of such prohibition or unenforceability without invalidating the remaining portions hereof or affecting the validity or enforceability of such provision in any other jurisdiction.

### **Venue and Choice of Law**

This Limited Warranty is applicable in all countries. This Limited Warranty will be governed by the laws of the State of Arizona (regardless of any conflict of laws rules), and any disputes arising from this Limited Warranty will be resolved in Phoenix, Arizona.

### **Entire Agreement**

This Limited Warranty is understood to be the complete and exclusive agreement between GAME and the purchaser of the Product, superseding all prior agreements, oral or written, and all other communications between such parties relating to the Product. No employee or representative of GAME or any other party is authorized to make any warranty in addition to the limited warranty set forth above.

---

Look for other GAME products at your favorite store or visit  
our website, [www.game-group.com](http://www.game-group.com).

---



Great American Merchandise & Events™  
16043 N. 82nd Street  
Scottsdale, AZ 85260-1800 U.S.A.

tel: 888.382.5988, 602.957.3825  
fax: 602.957.7665  
email: [products@game-group.com](mailto:products@game-group.com)  
[www.game-group.com](http://www.game-group.com)